



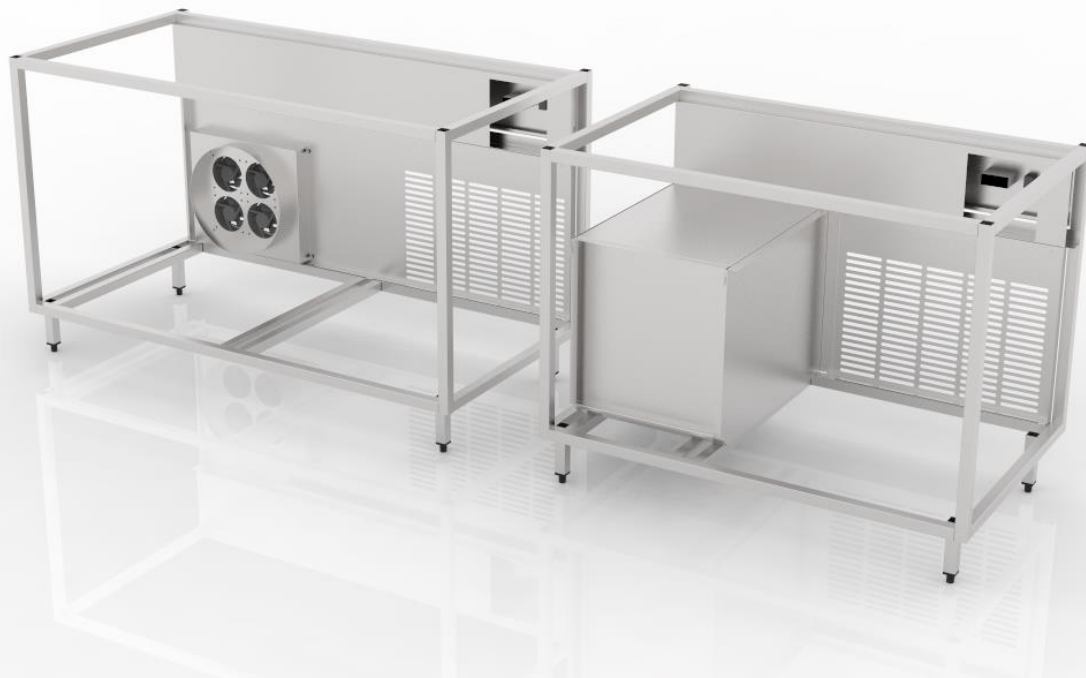
# Cold Base Units

Design Guidelines



The ambient units are modular and the internal sections are tanked.

They are manufactured with a chamfer to the rear of the base which will make cleaning easier.



Our compressor housing is fully boxed in.

---

Our cladding has been updated to keep the same appearance inside & out allowing us to remove any raw edges.

This new system of manufacture means that our production is more efficient resulting in less material waste.



## Shine Cold Base Unit Spec

There are 3 different specifications for our units.

### Premium:

1.2mm 304 Grade Panels, 304 Grade Framework

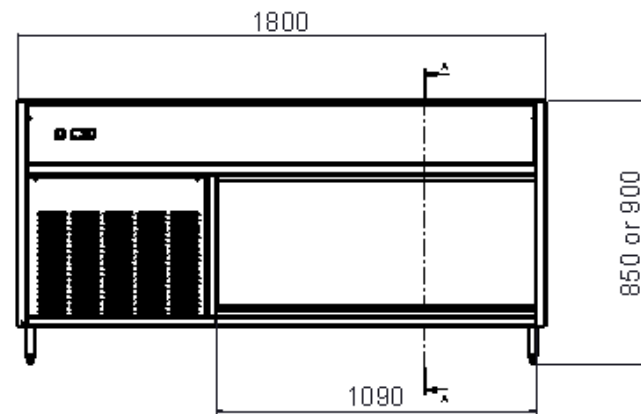
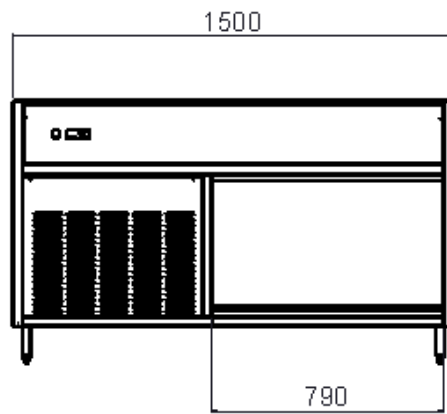
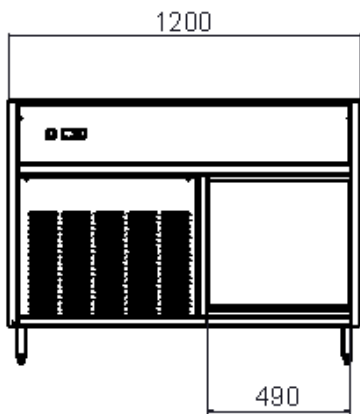
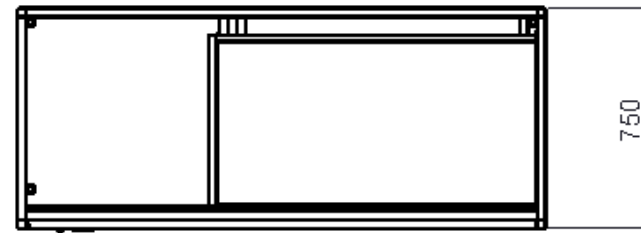
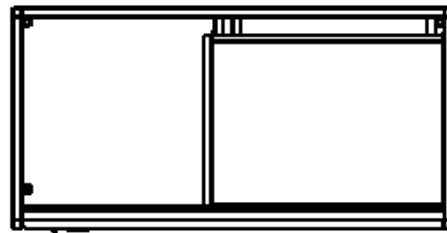
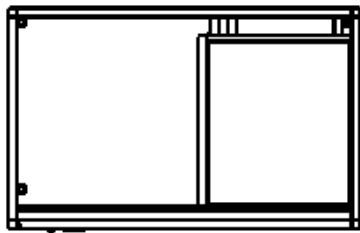
### Standard:

1mm 304 Grade Panels, 304 Grade Framework

### Shine Lite:

1mm 430 Grade Panels, 430 Grade Framework





Manufactured in set sizes of:

3 Bay at 1200mm

4 Bay at 1500mm

5 Bay at 1800mm

The Sizes are all based on our ceran glass panels.

The storage in the unit will increase with the length of the units to maximise the space available.